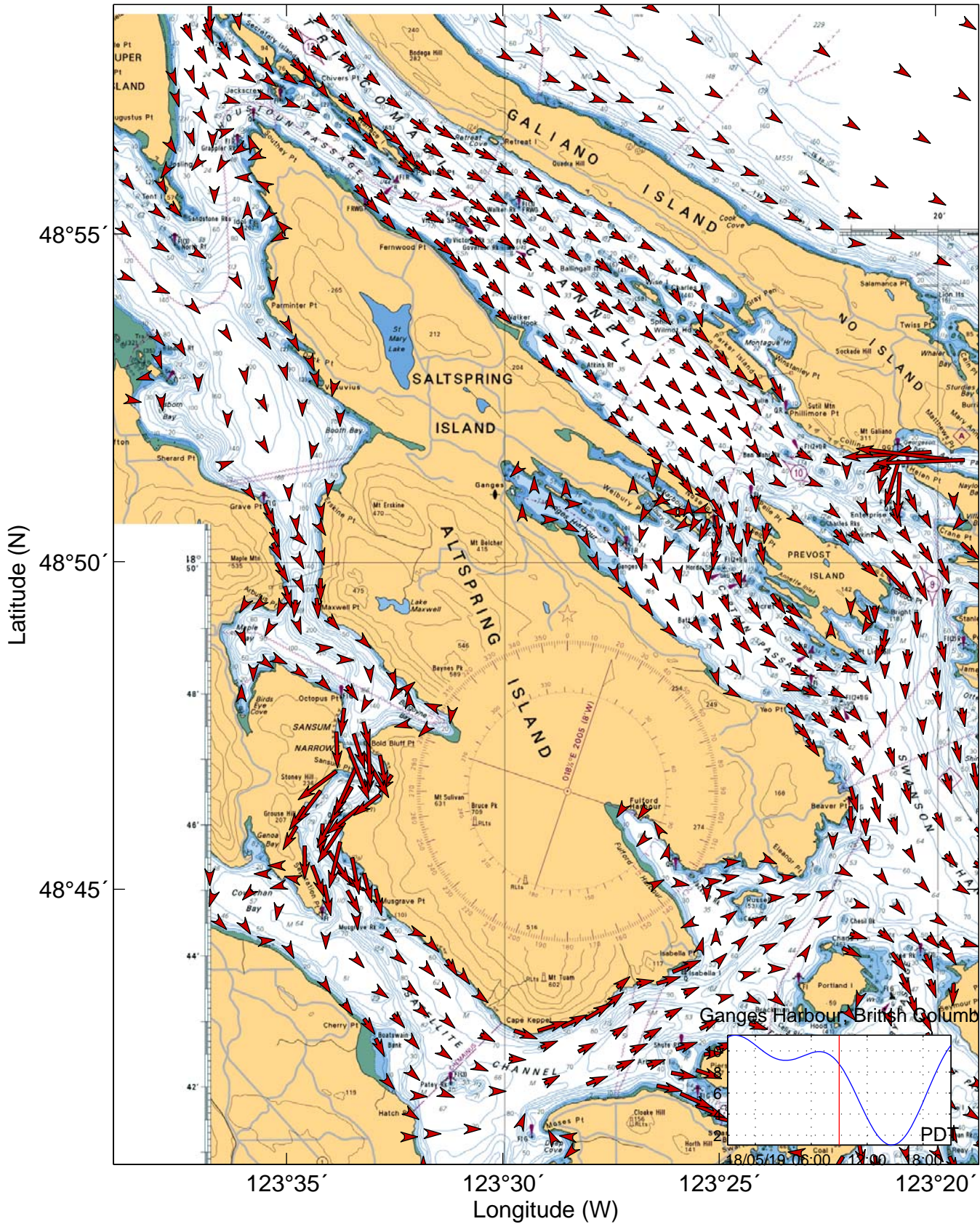

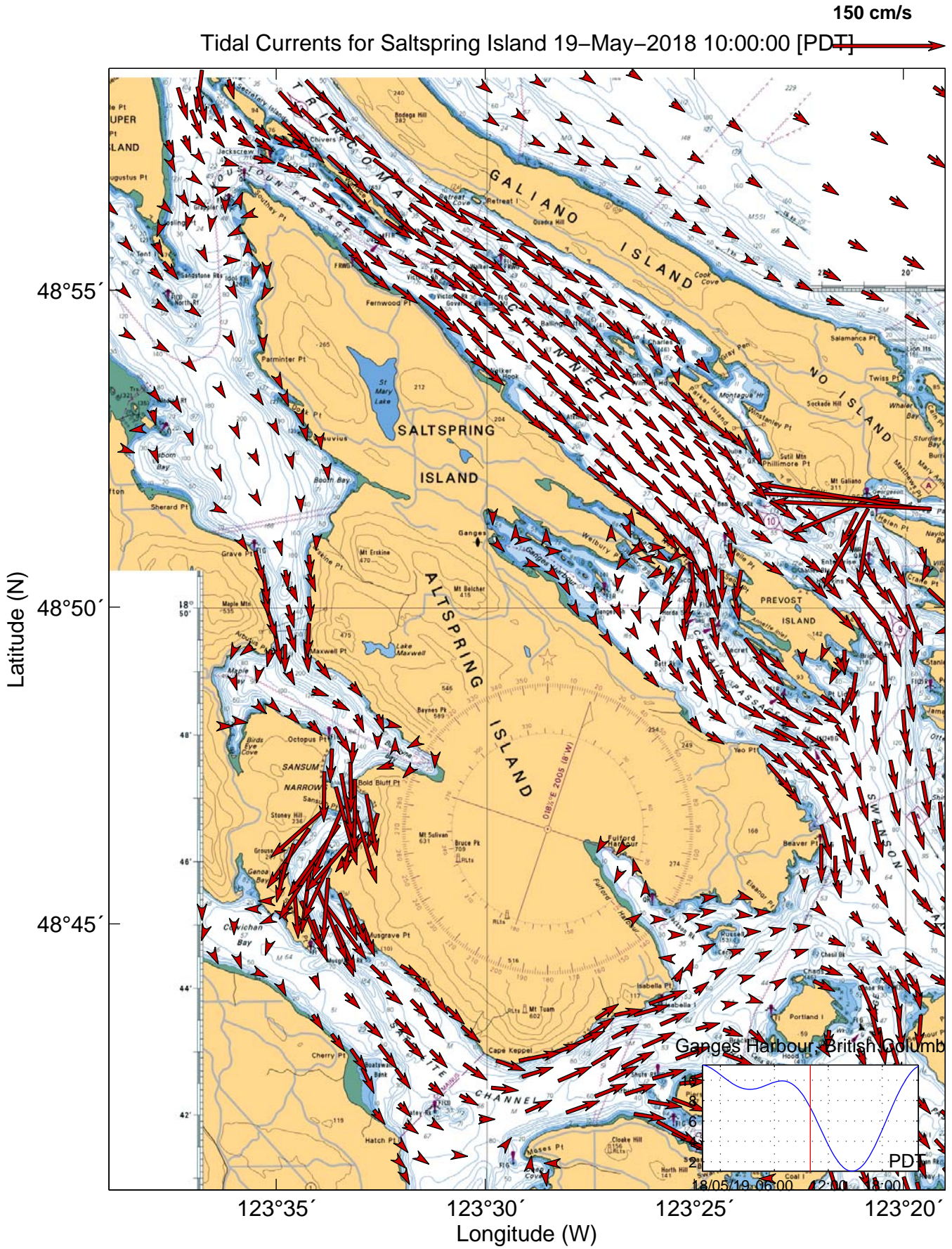


Tidal Currents for Saltspring Island 19-May-2018 09:00:00 [PDT]

150 cm/s

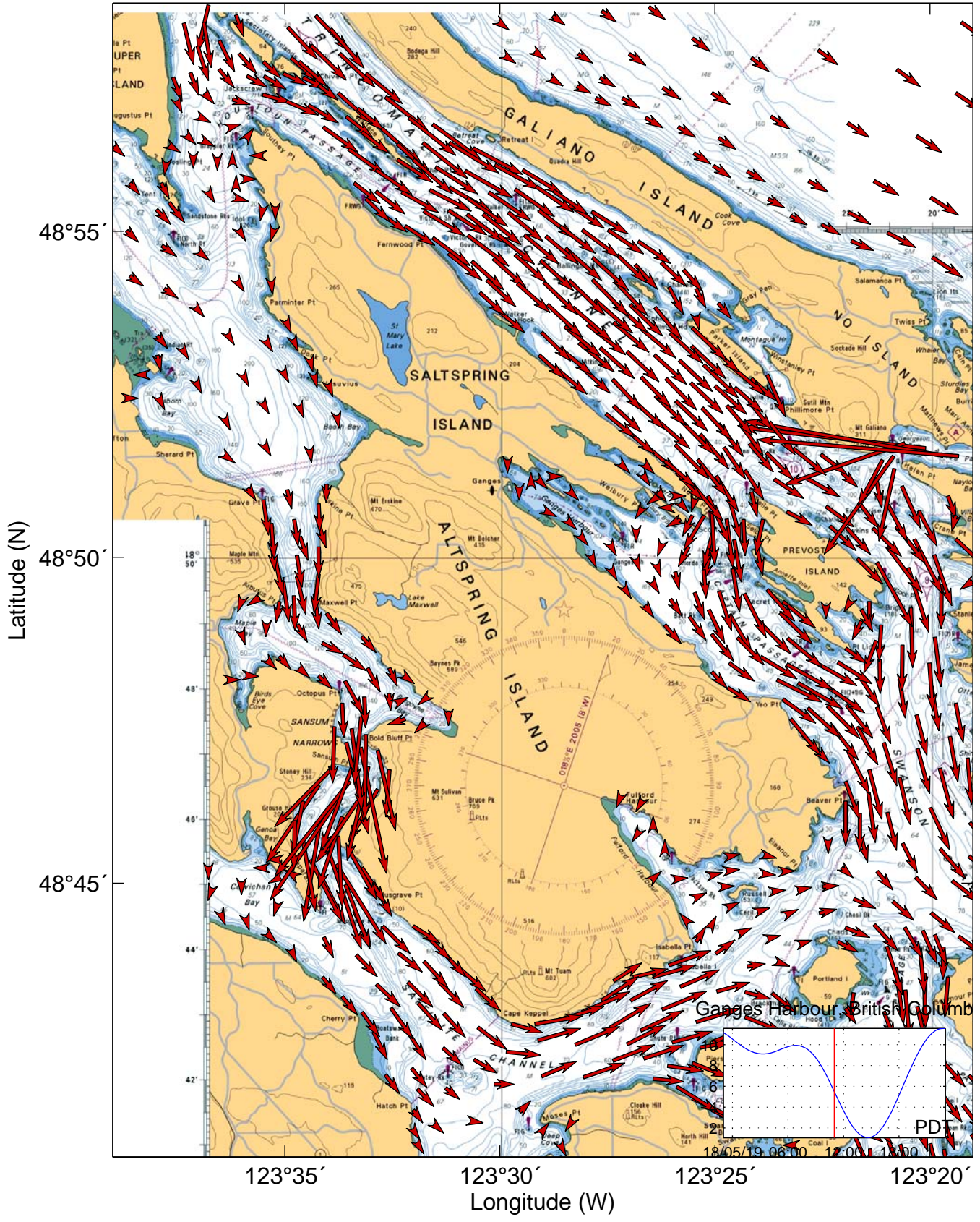


Tidal Currents for Saltspring Island 19-May-2018 10:00:00 [PDT] 



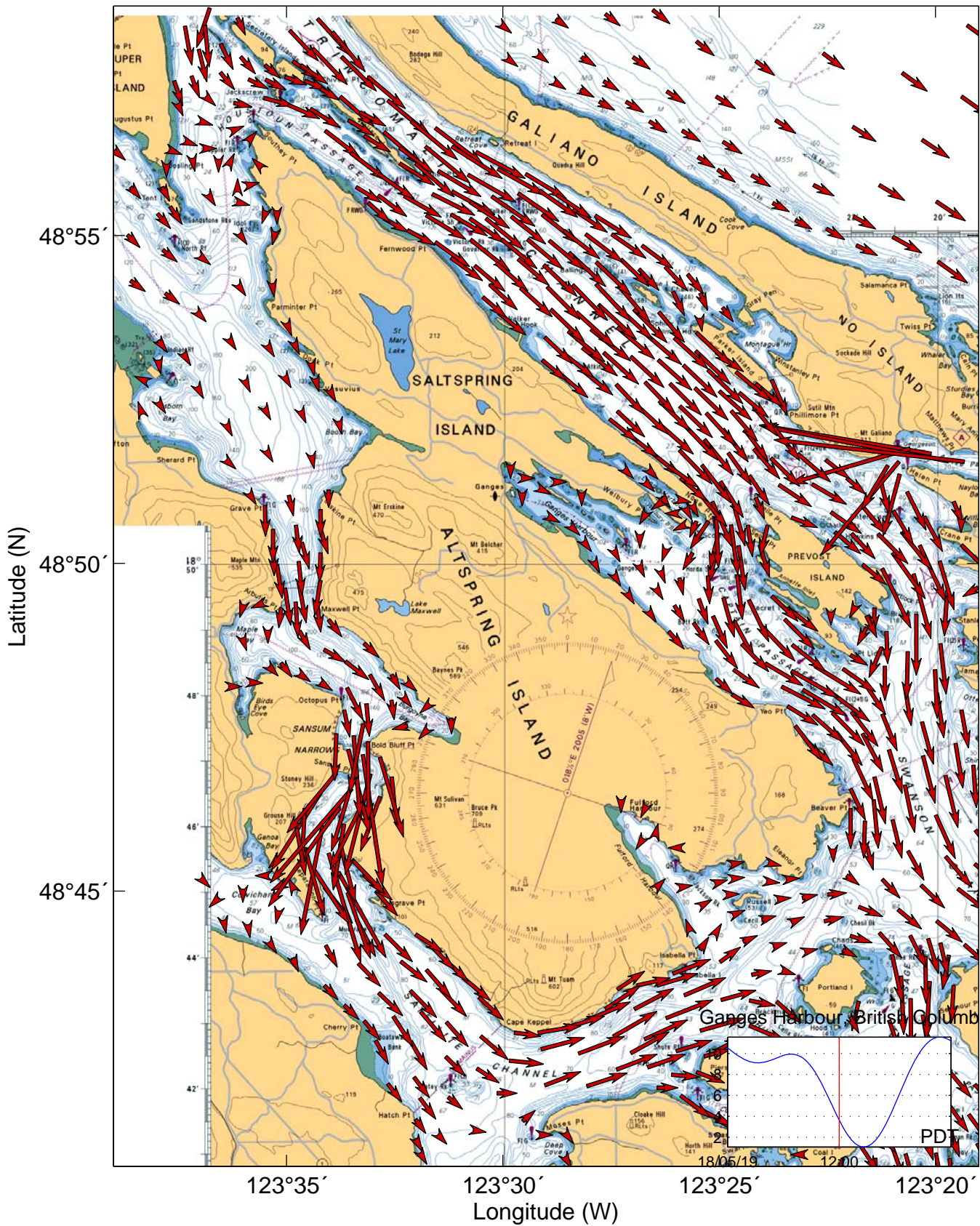
Tidal Currents for Saltspring Island 19-May-2018 11:00:00 [PDT]

150 cm/s



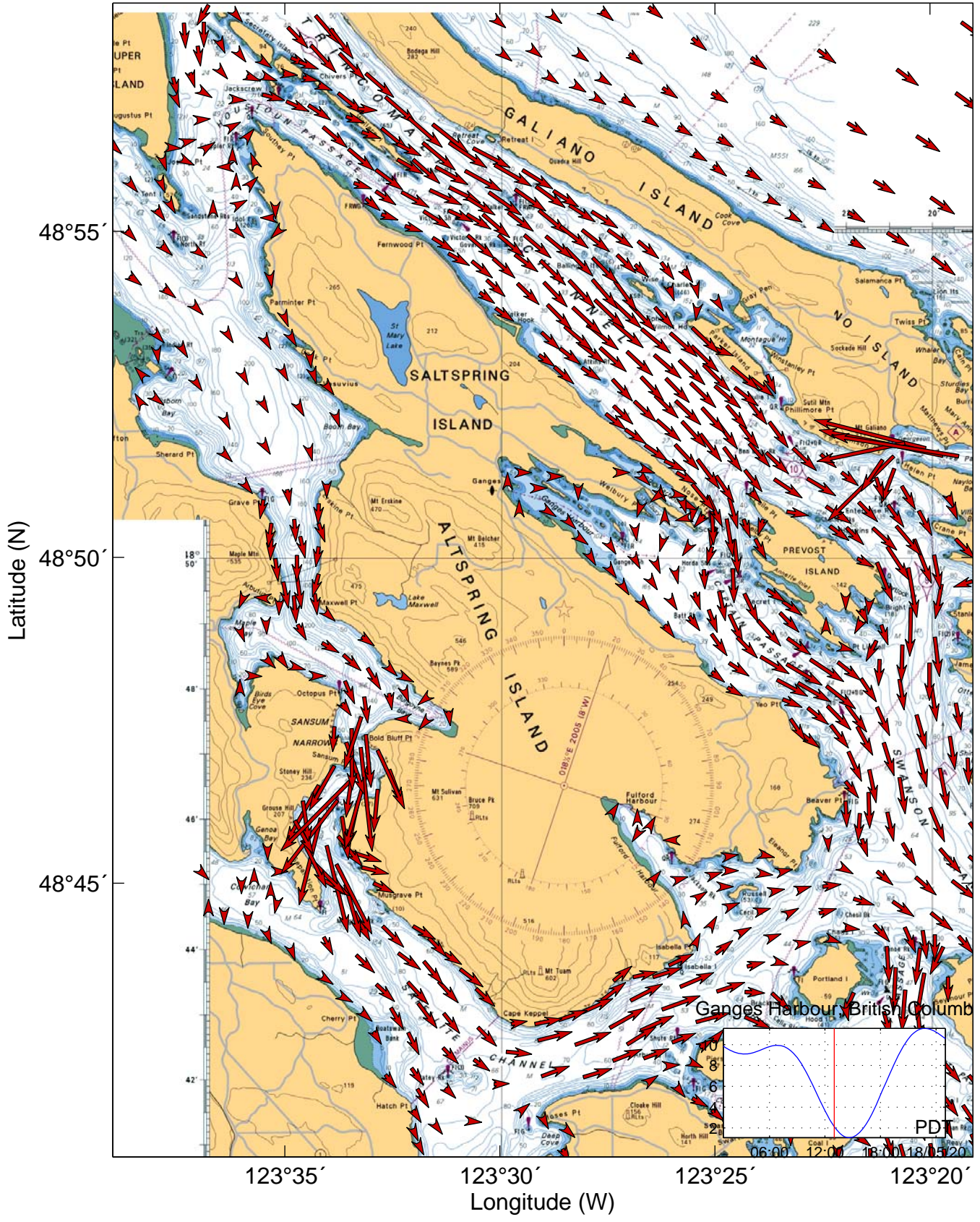
Tidal Currents for Saltspring Island 19-May-2018 12:00:00 [PDT]

150 cm/s



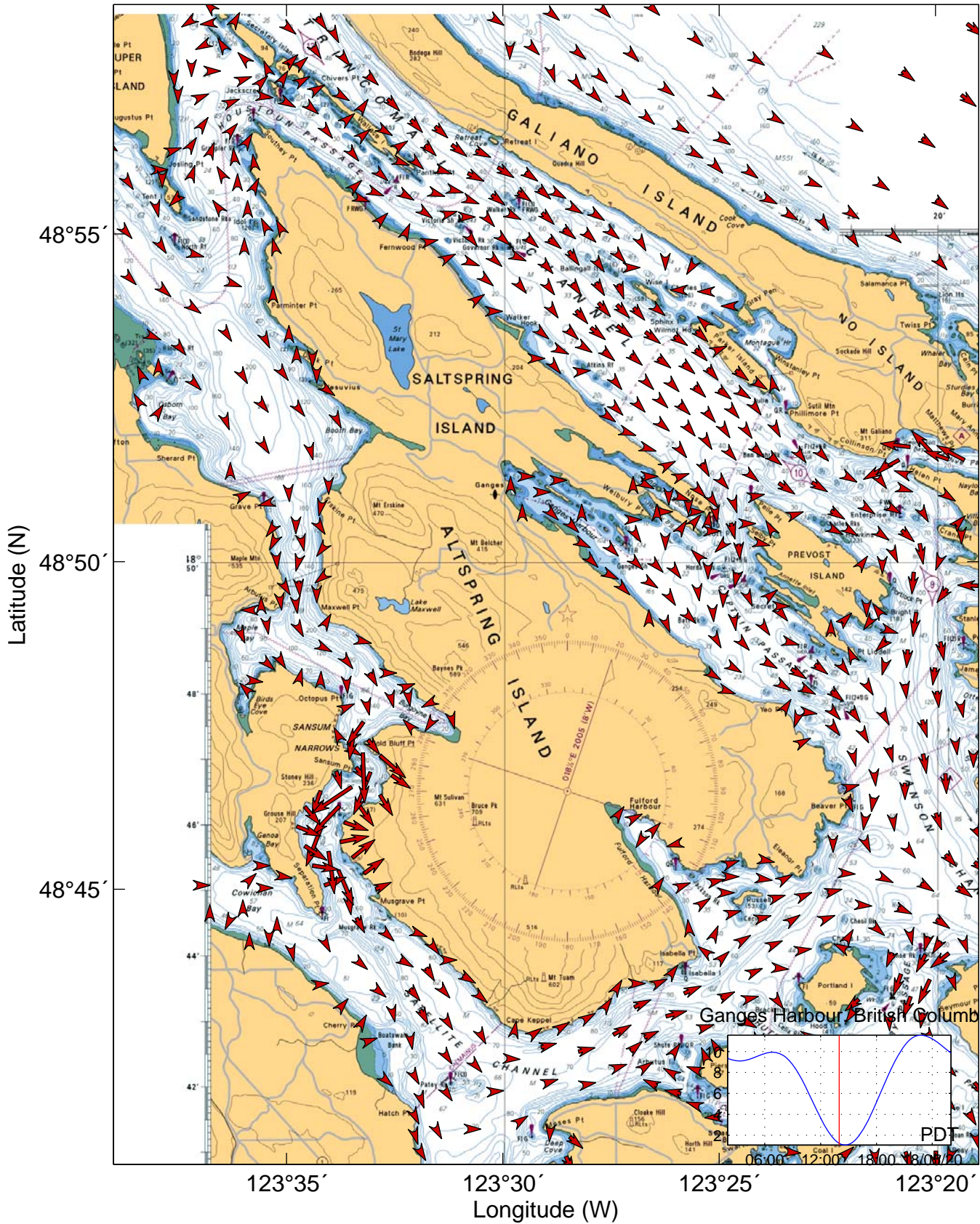
Tidal Currents for Saltspring Island 19-May-2018 13:00:00 [PDT]


150 cm/s



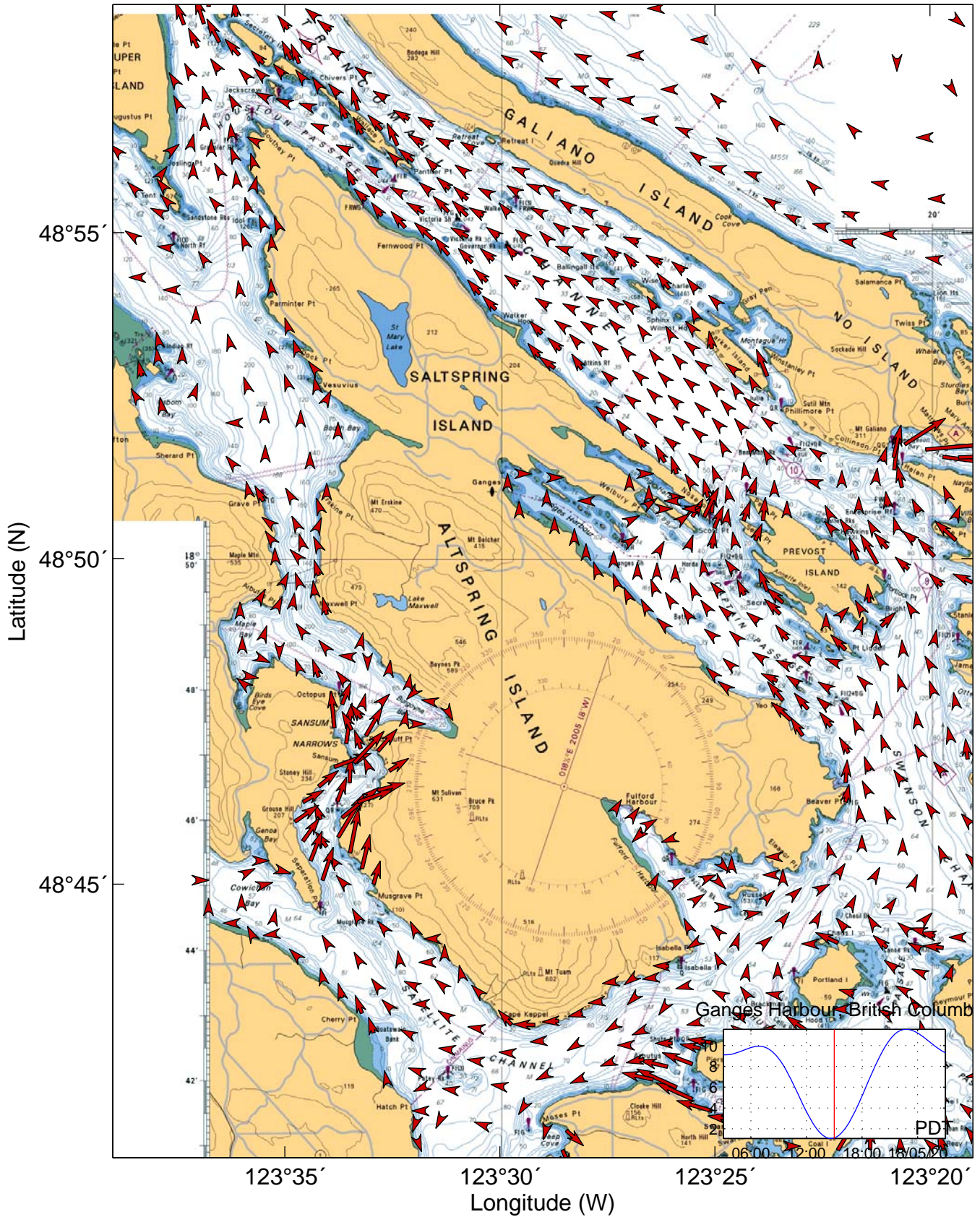
Tidal Currents for Saltspring Island 19-May-2018 14:00:00 [PDT]

150 cm/s



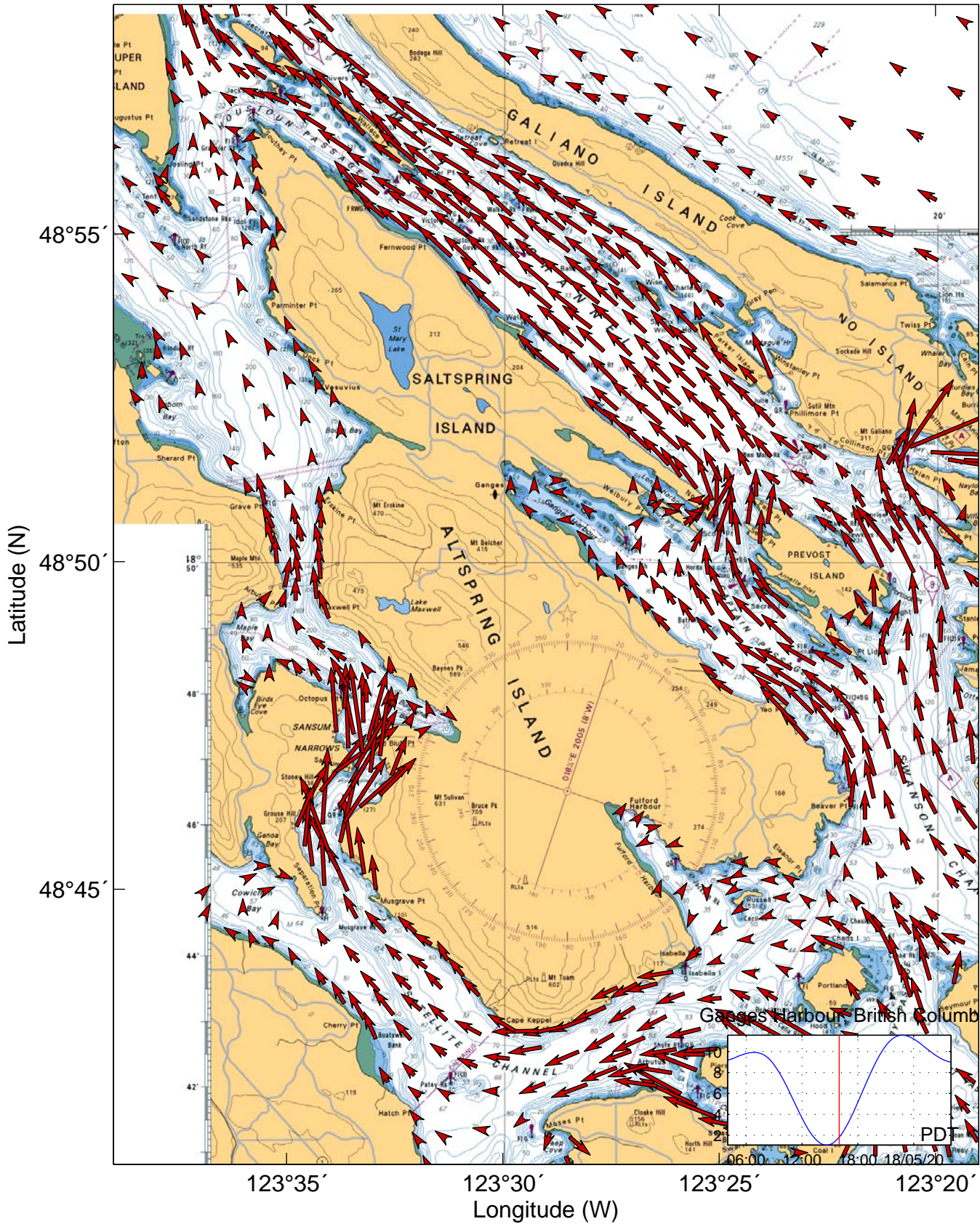
Tidal Currents for Saltspring Island 19-May-2018 15:00:00 [PDT] 

150 cm/s



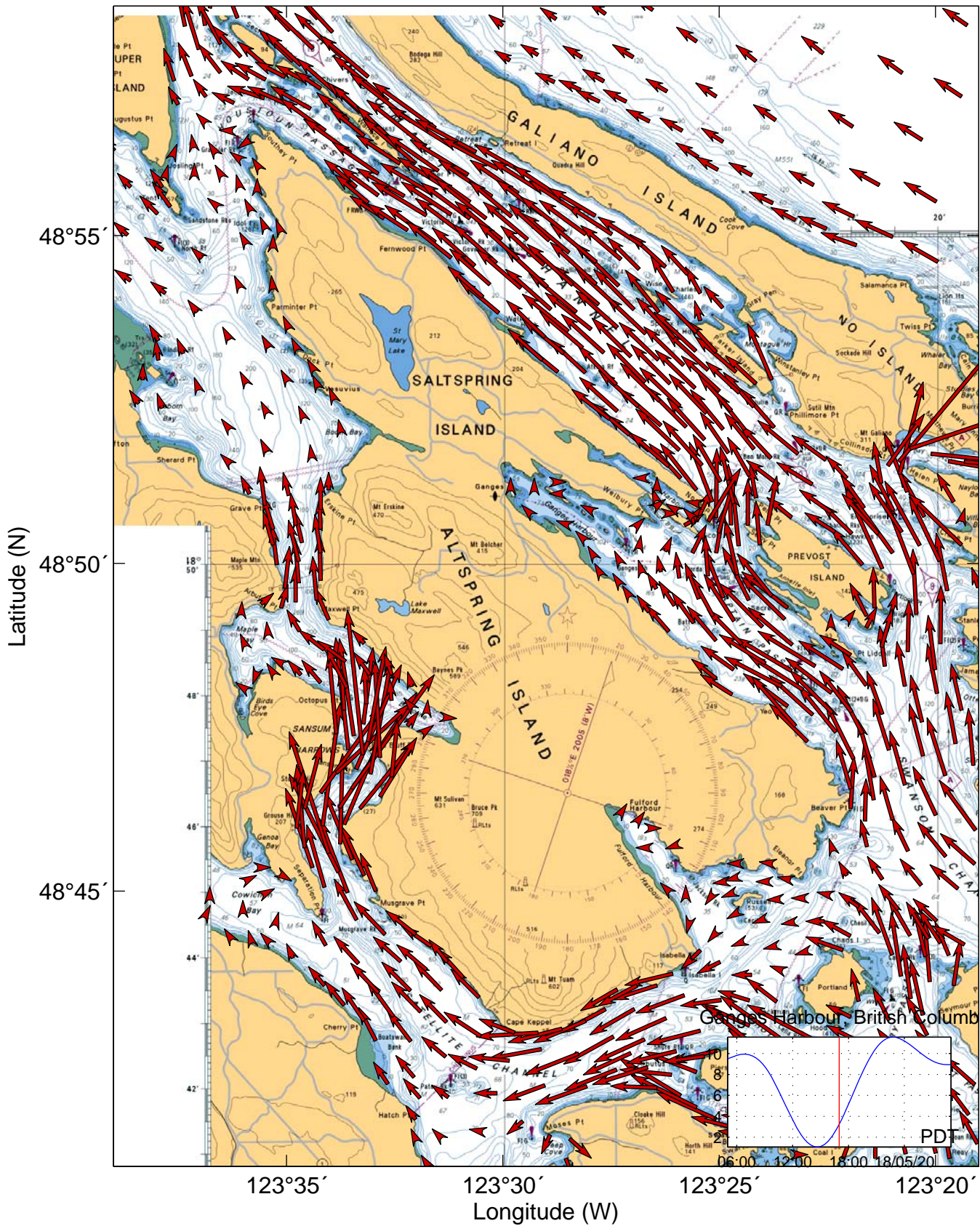
Tidal Currents for Saltspring Island 19-May-2018 16:00:00 [PDT]

150 cm/s



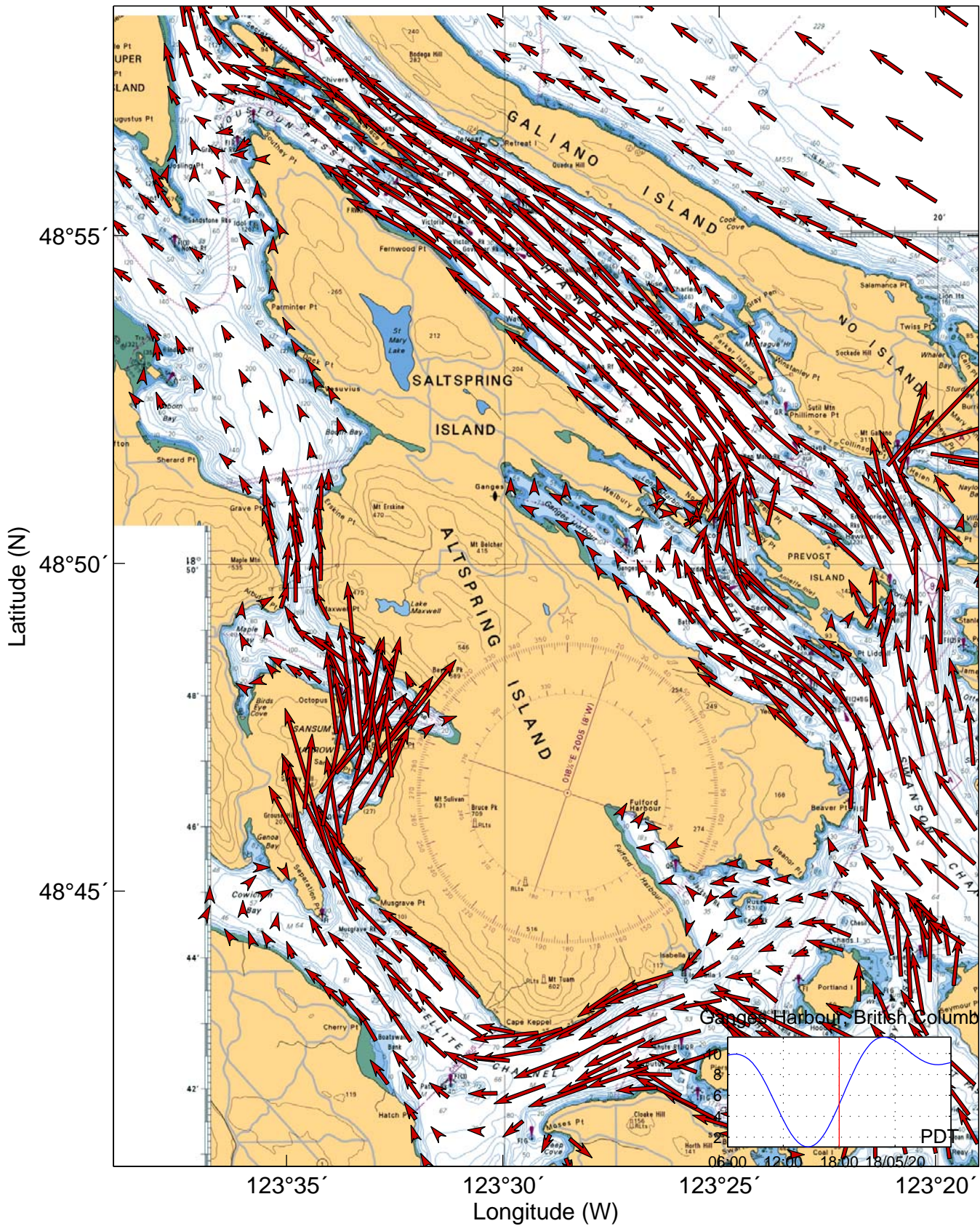
Tidal Currents for Saltspring Island 19-May-2018 17:00:00 [PDT]

150 cm/s



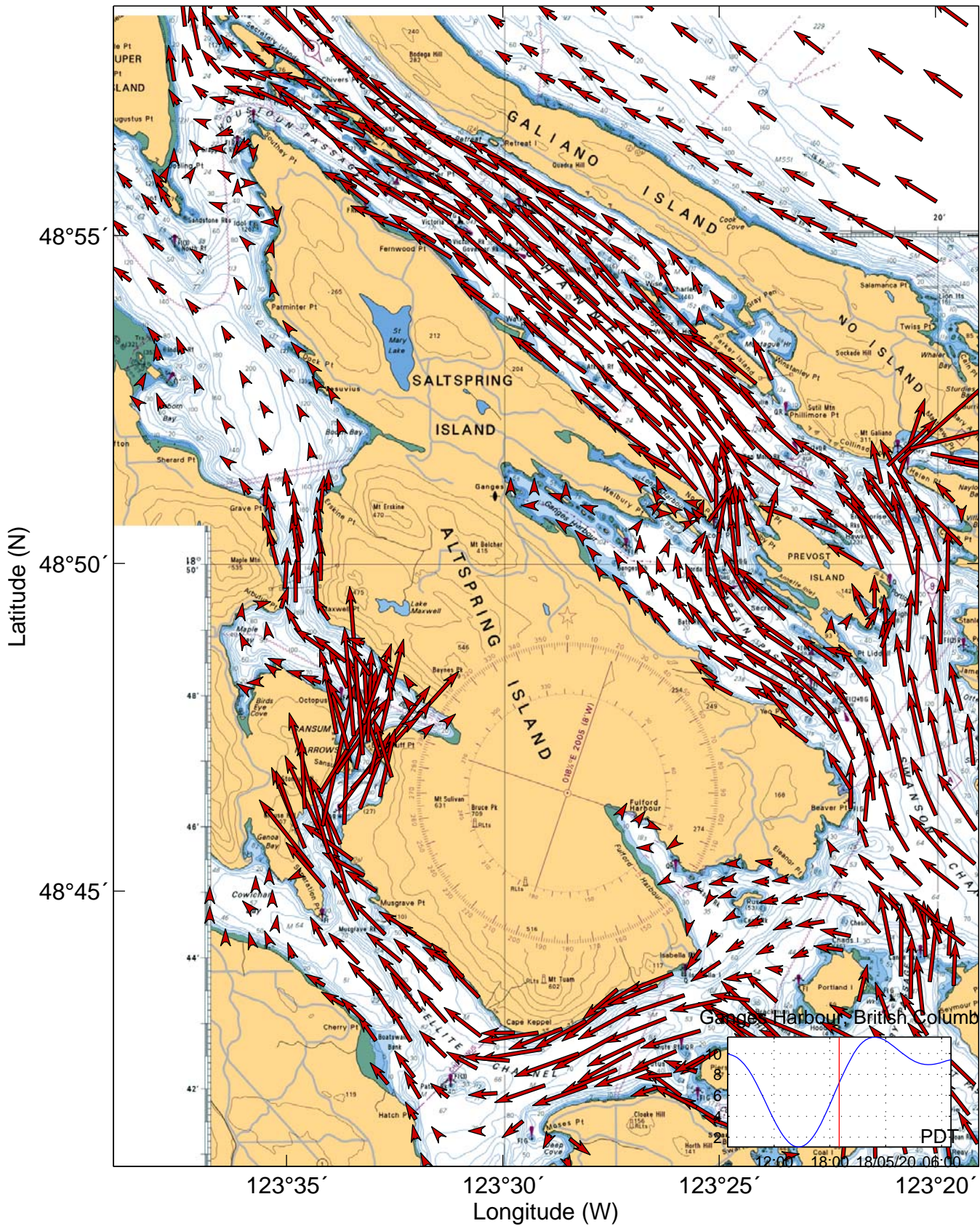
Tidal Currents for Saltspring Island 19-May-2018 18:00:00 [PDT]

150 cm/s



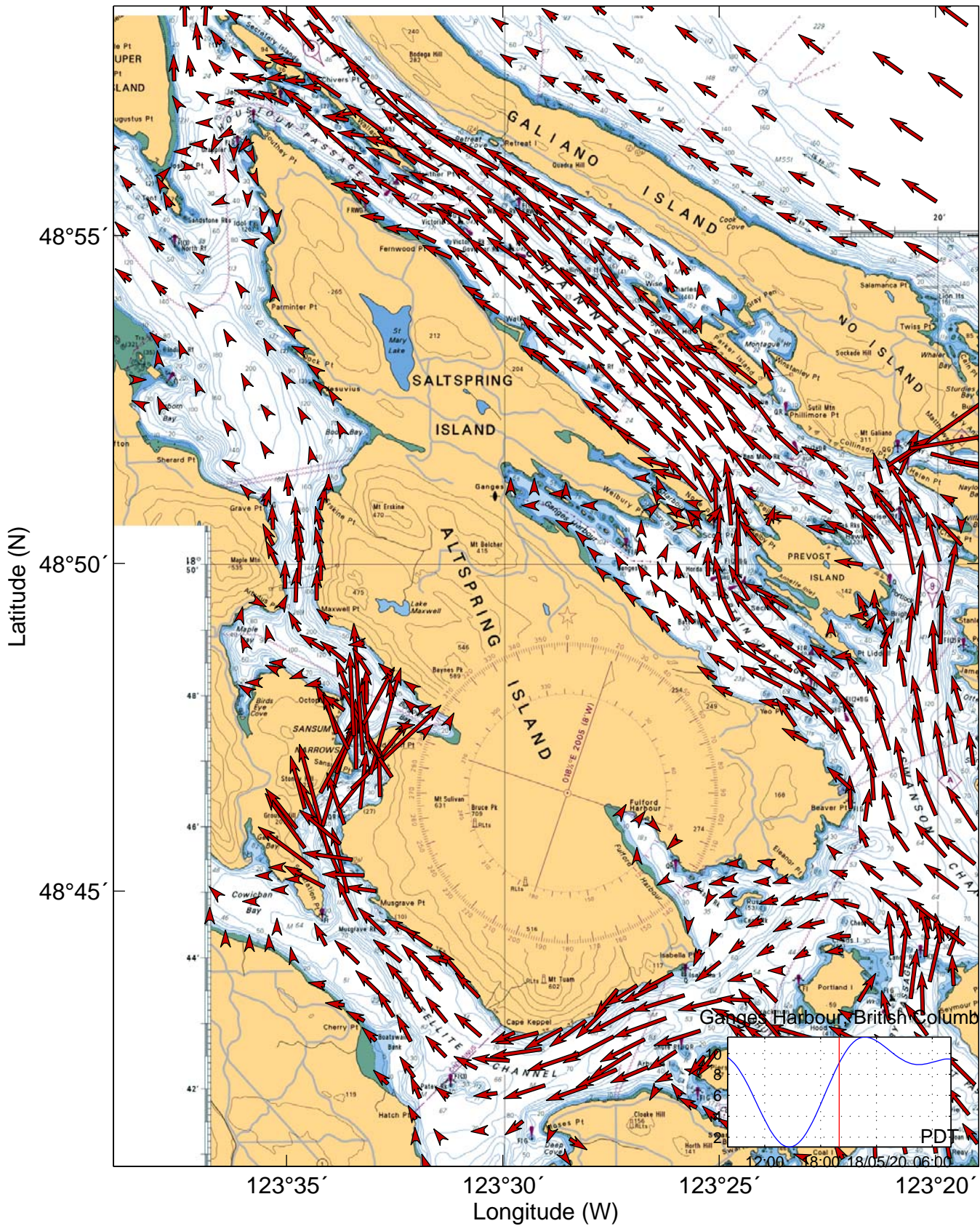
Tidal Currents for Saltspring Island 19-May-2018 19:00:00 [PDT]

150 cm/s



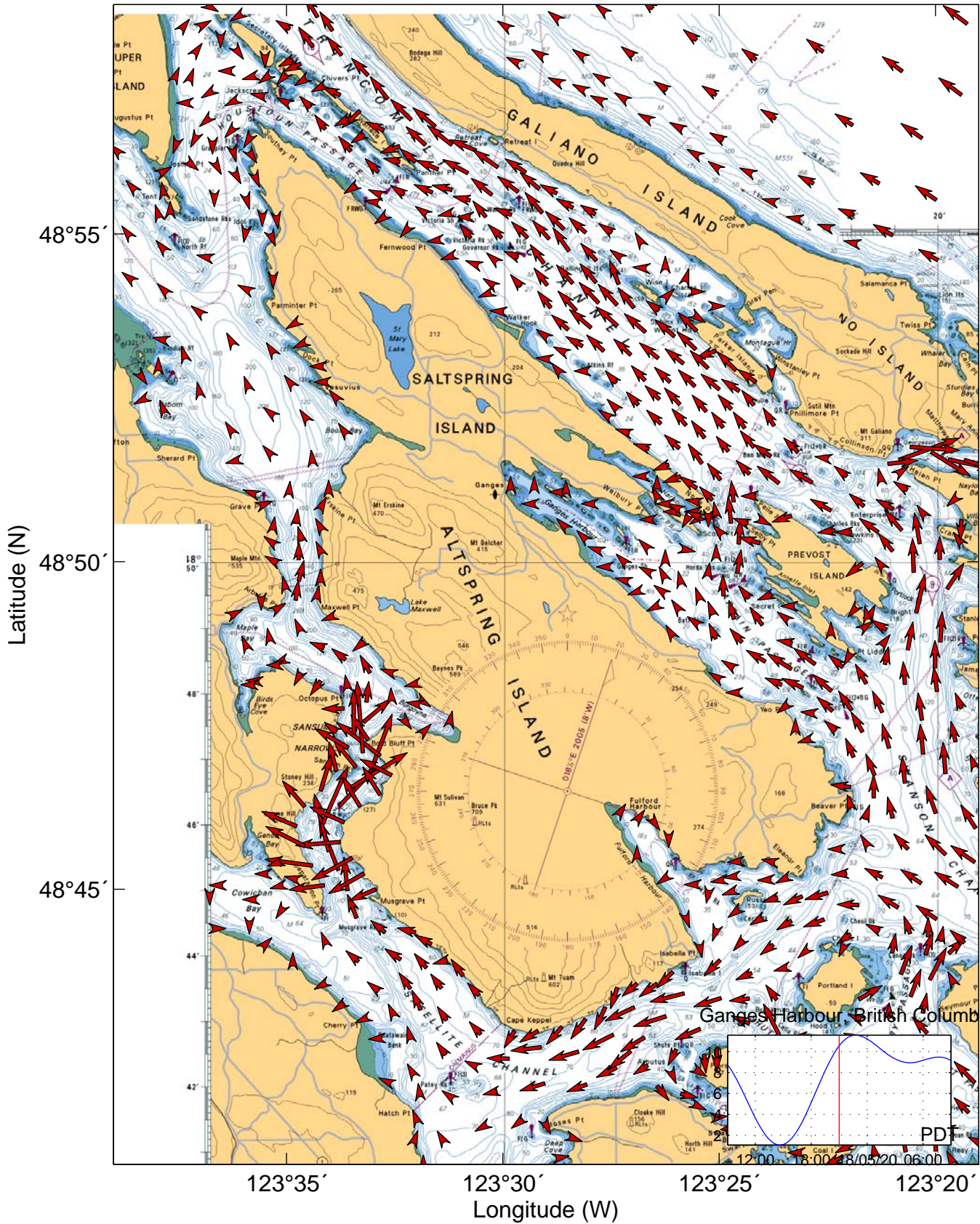
Tidal Currents for Saltspring Island 19-May-2018 20:00:00 [PDT]


150 cm/s



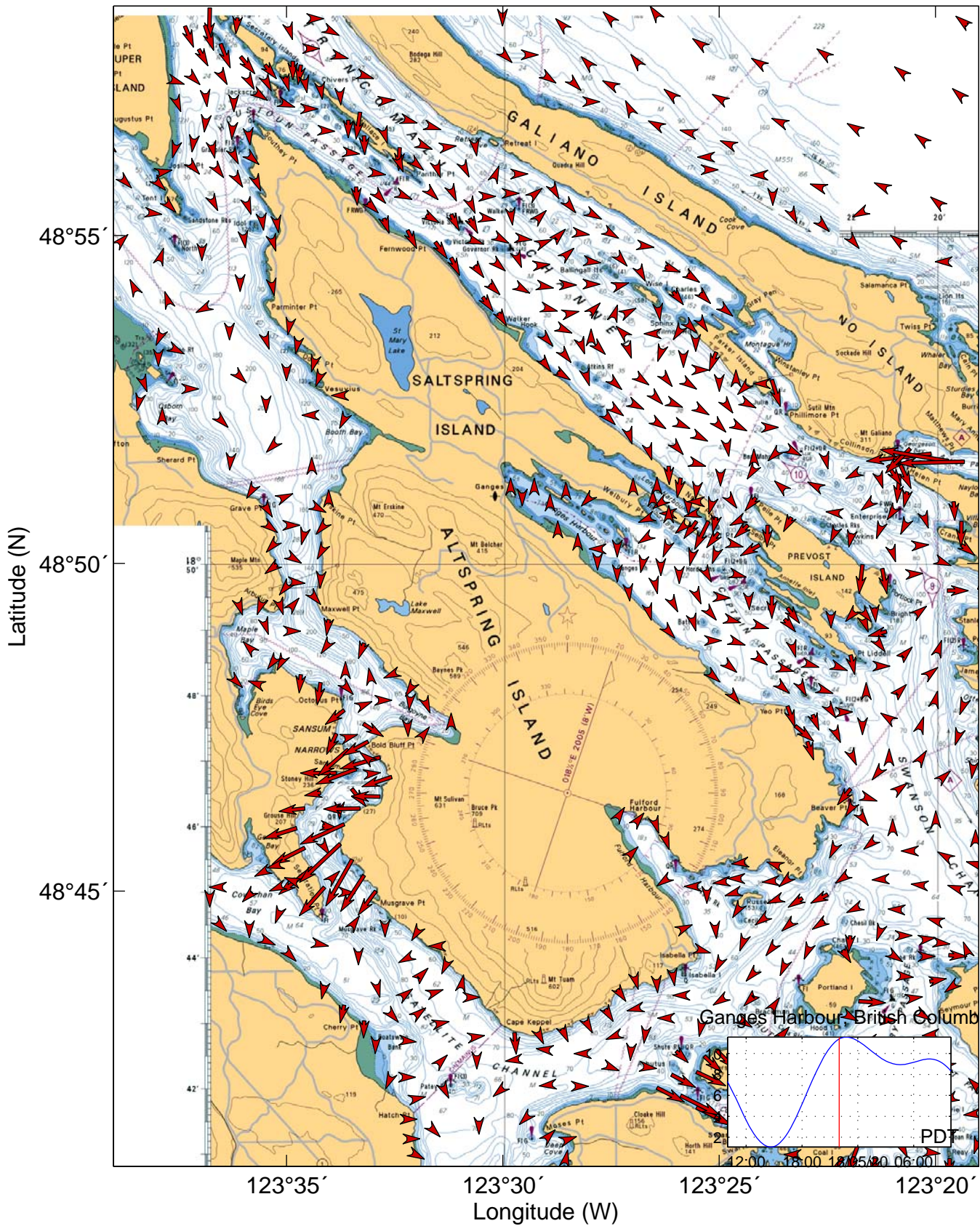
Tidal Currents for Saltspring Island 19-May-2018 21:00:00 [PDT]

150 cm/s



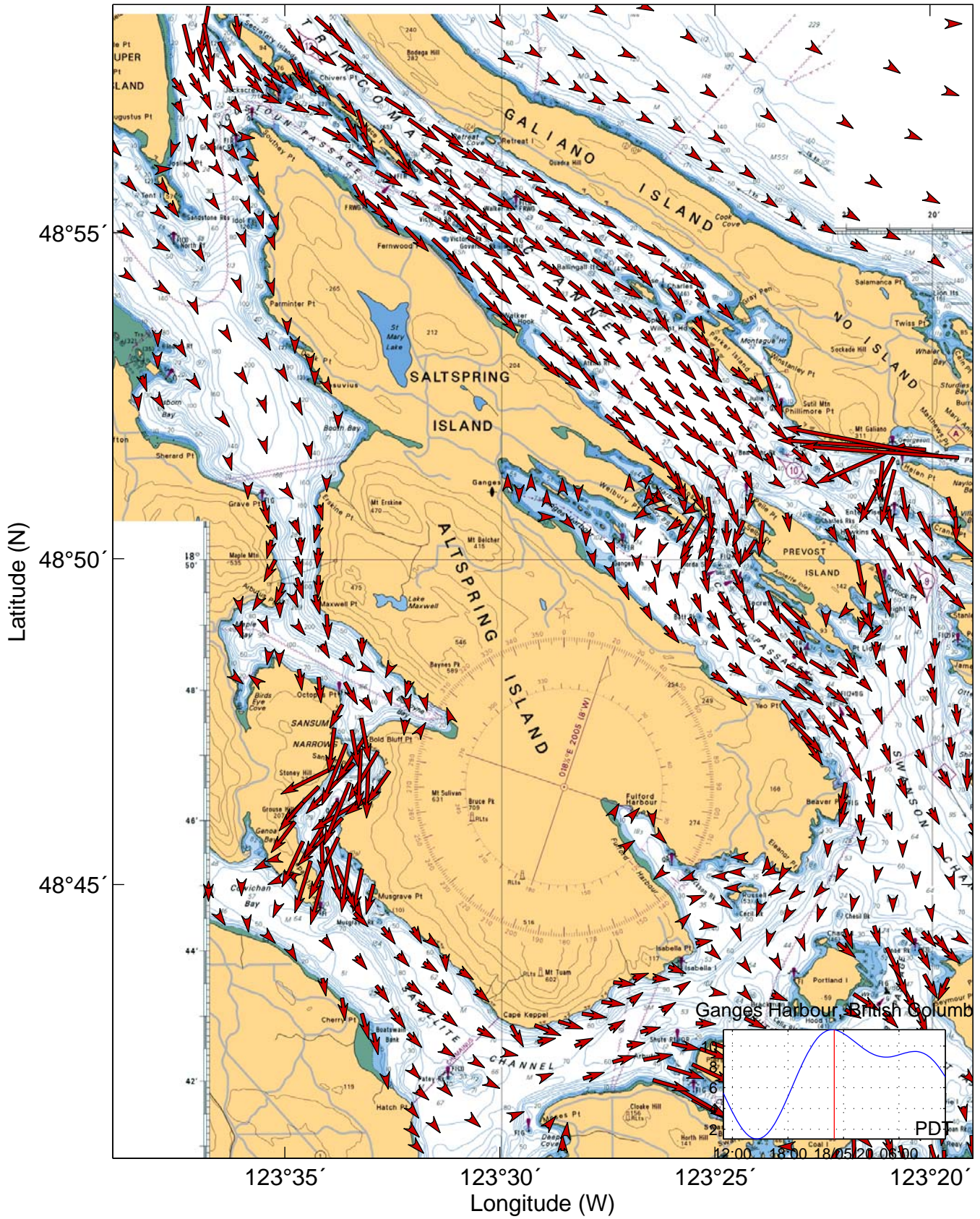
Tidal Currents for Saltspring Island 19-May-2018 22:00:00 [PDT] 

150 cm/s



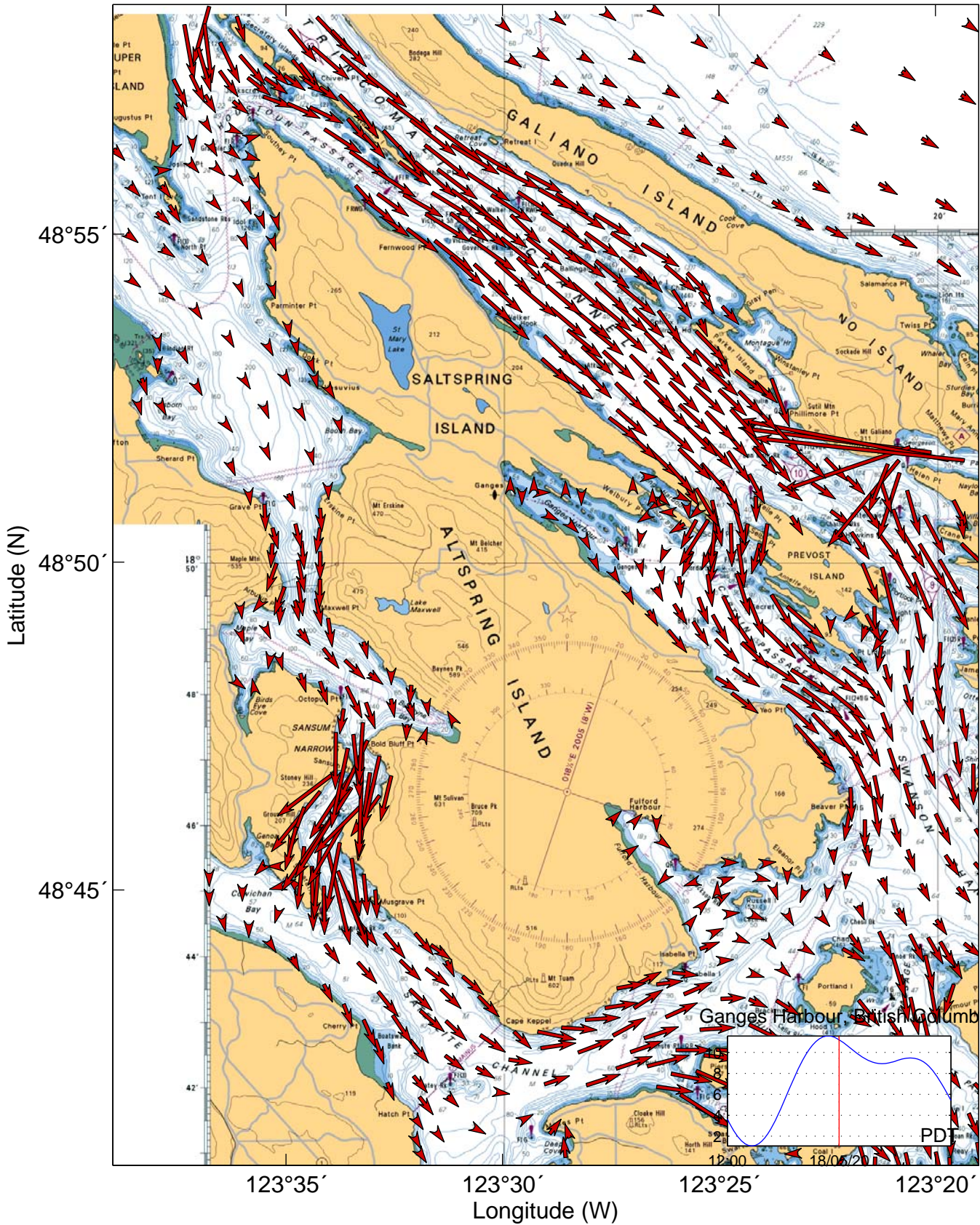
Tidal Currents for Saltspring Island 19-May-2018 23:00:00 [PDT]

150 cm/s



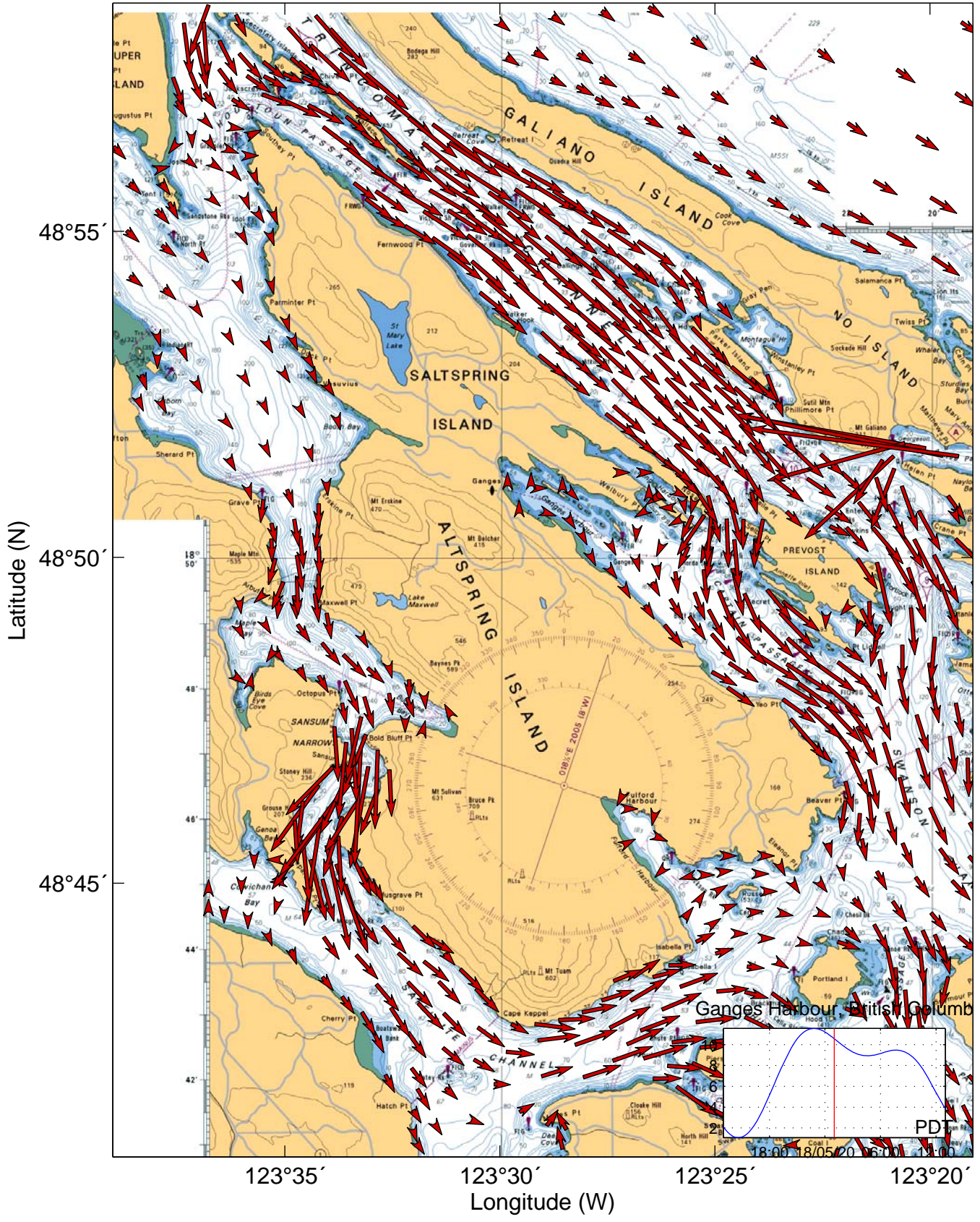
Tidal Currents for Saltspring Island 20-May-2018 [PDT]

150 cm/s



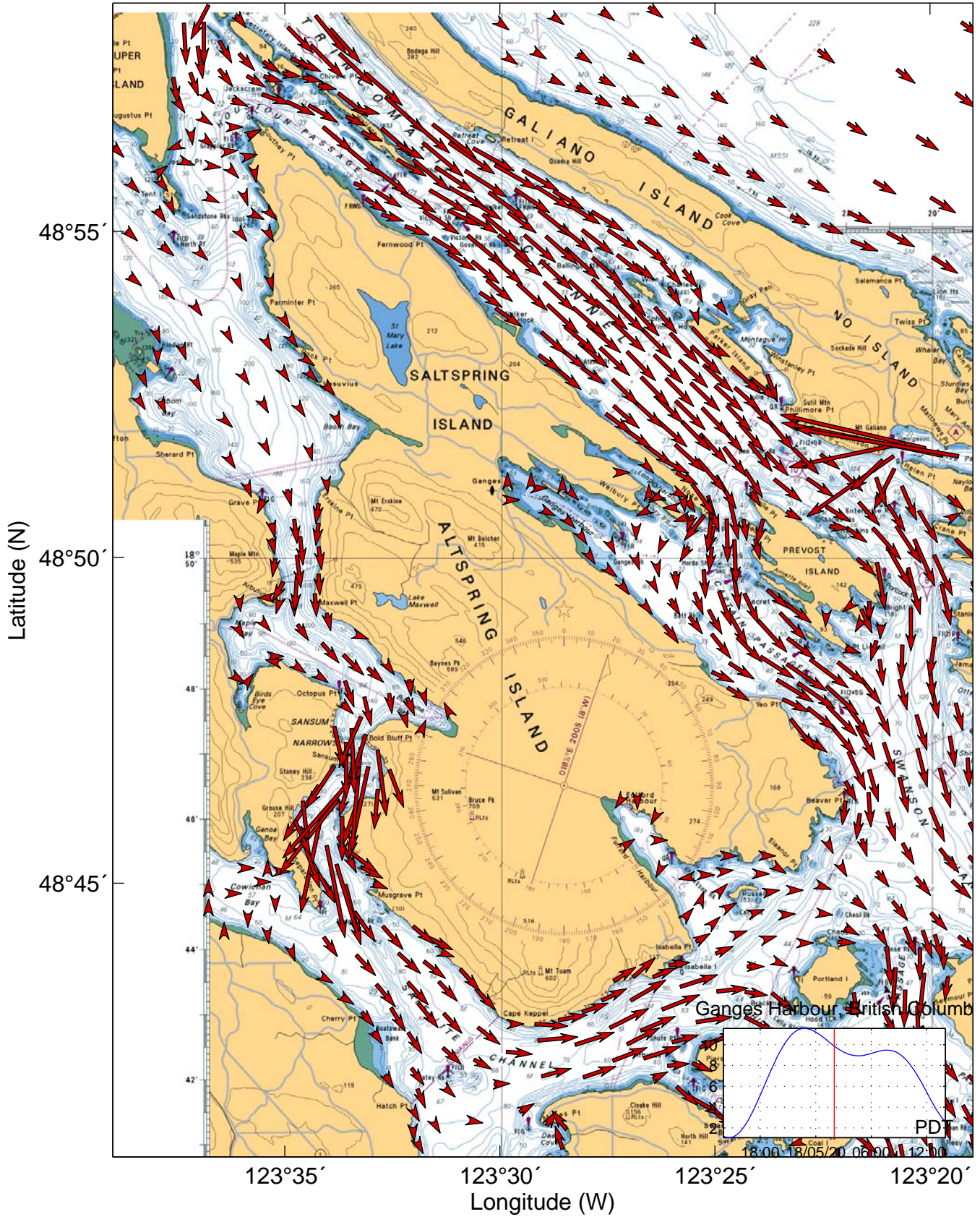
Tidal Currents for Saltspring Island 20-May-2018 01:00:00 [PDT]

150 cm/s



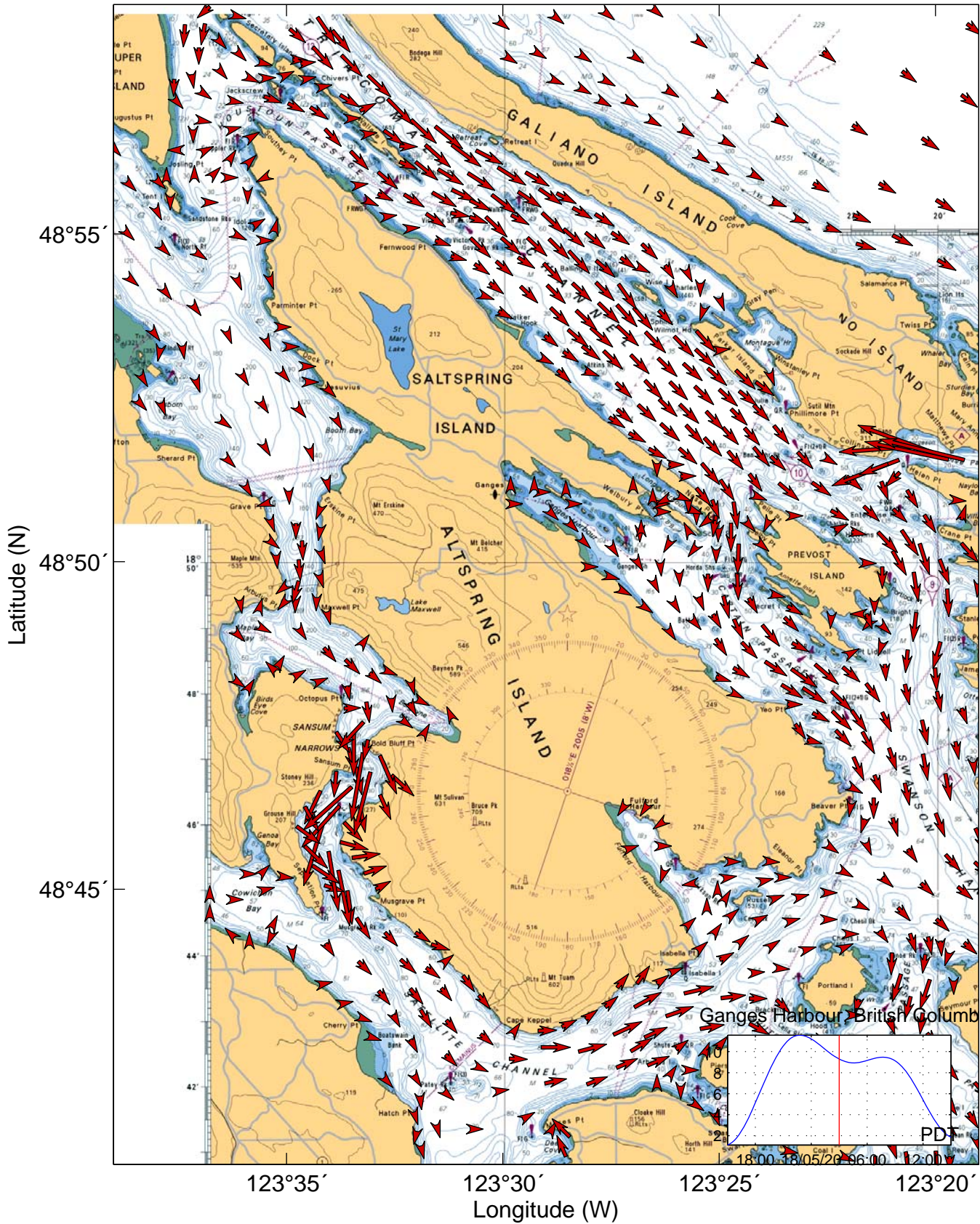
Tidal Currents for Saltspring Island 20-May-2018 02:00:00 [PDT]


150 cm/s



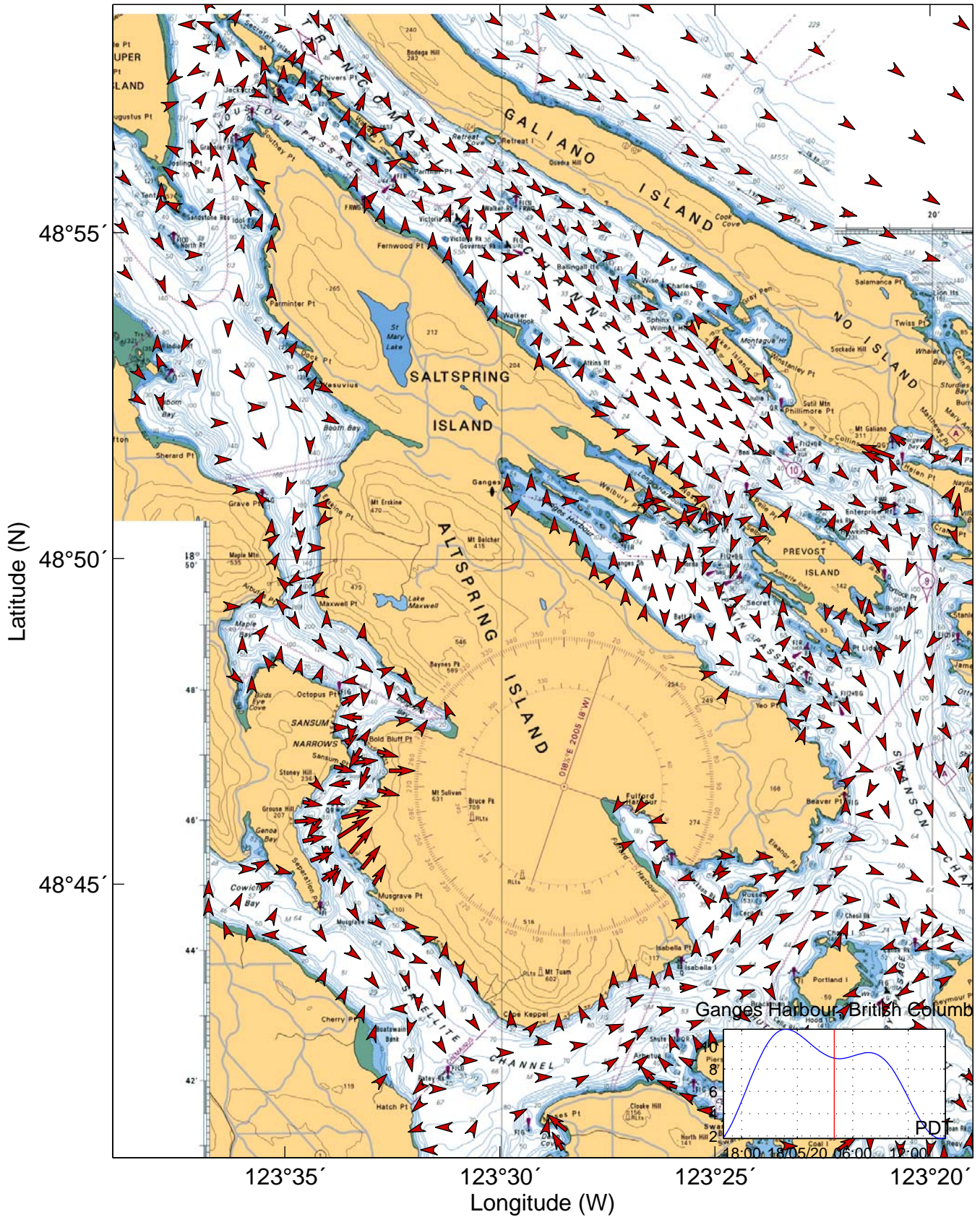
Tidal Currents for Saltspring Island 20-May-2018 03:00:00 [PDT]


150 cm/s



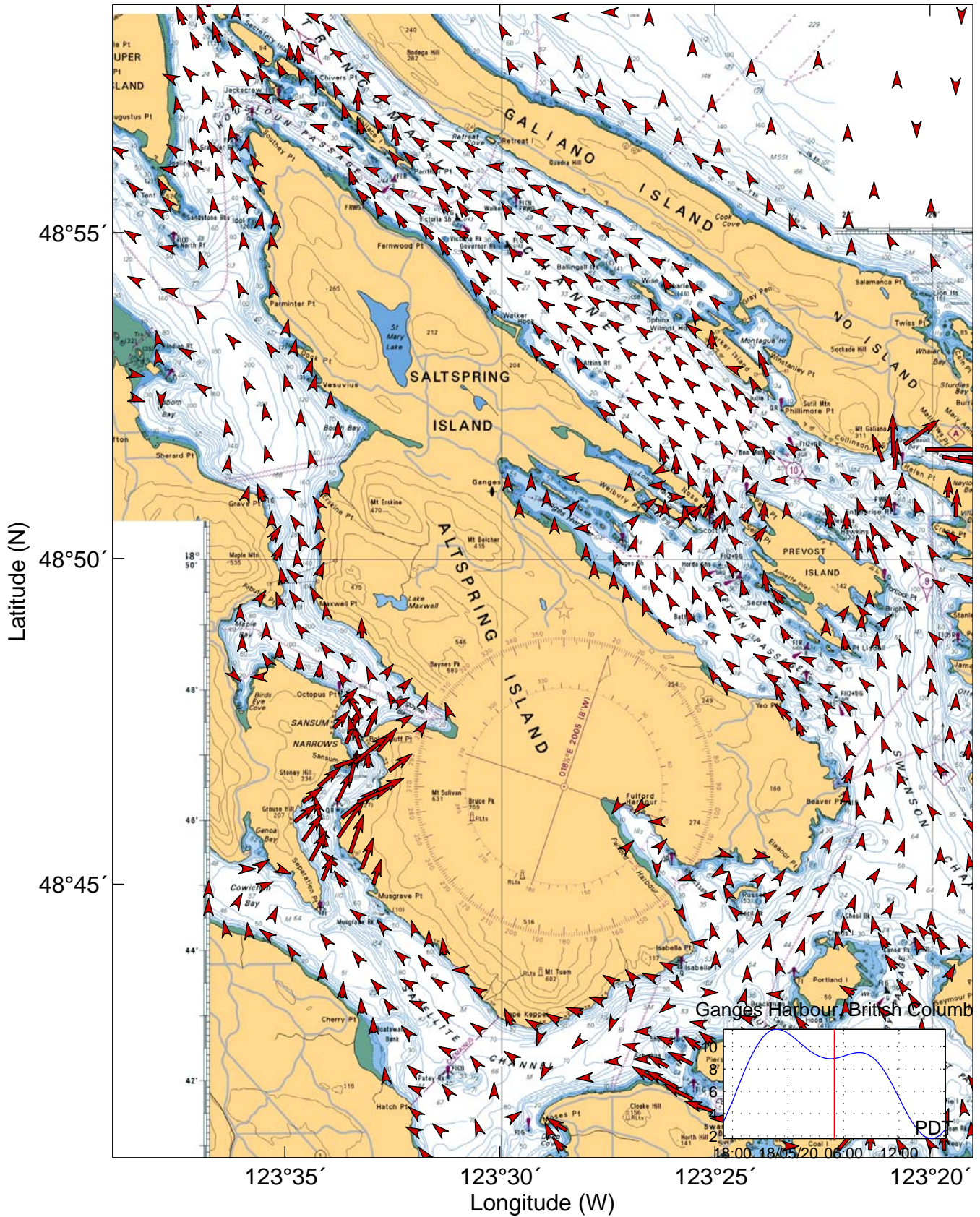
Tidal Currents for Saltspring Island 20-May-2018 04:00:00 [PDT] 


150 cm/s



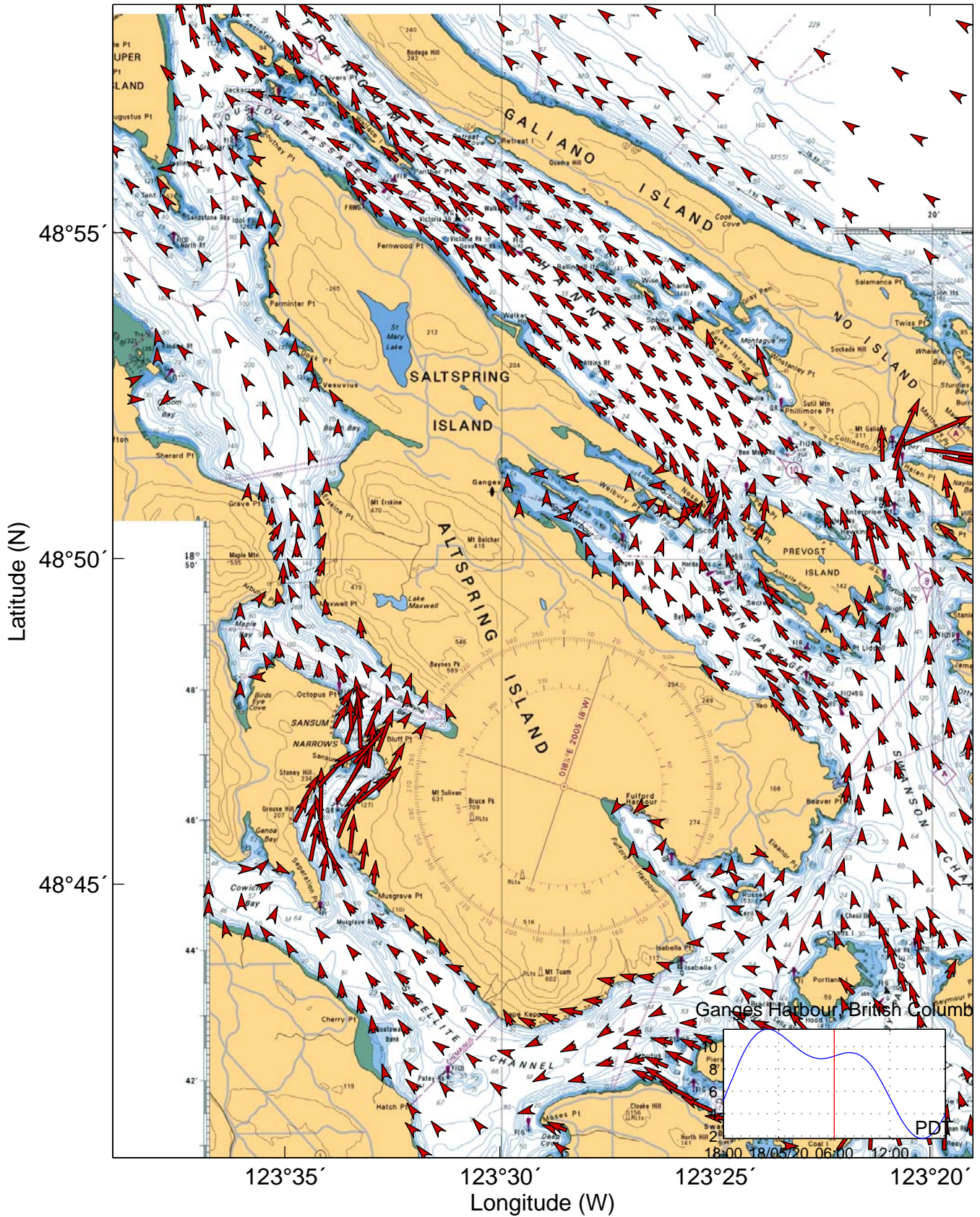
Tidal Currents for Saltspring Island 20-May-2018 05:00:00 [PDT] 

150 cm/s



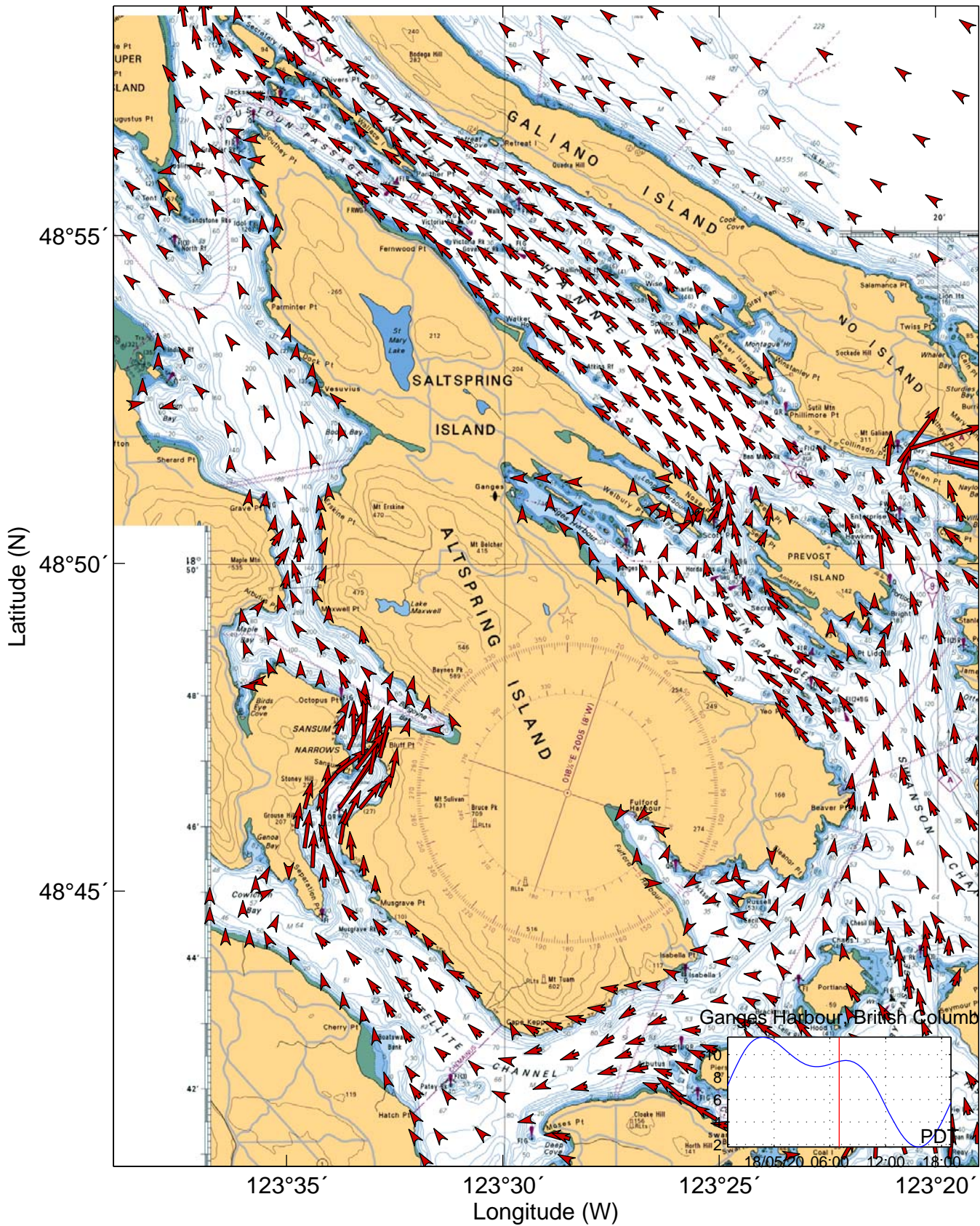
Tidal Currents for Saltspring Island 20-May-2018 06:00:00 [PDT] 

150 cm/s



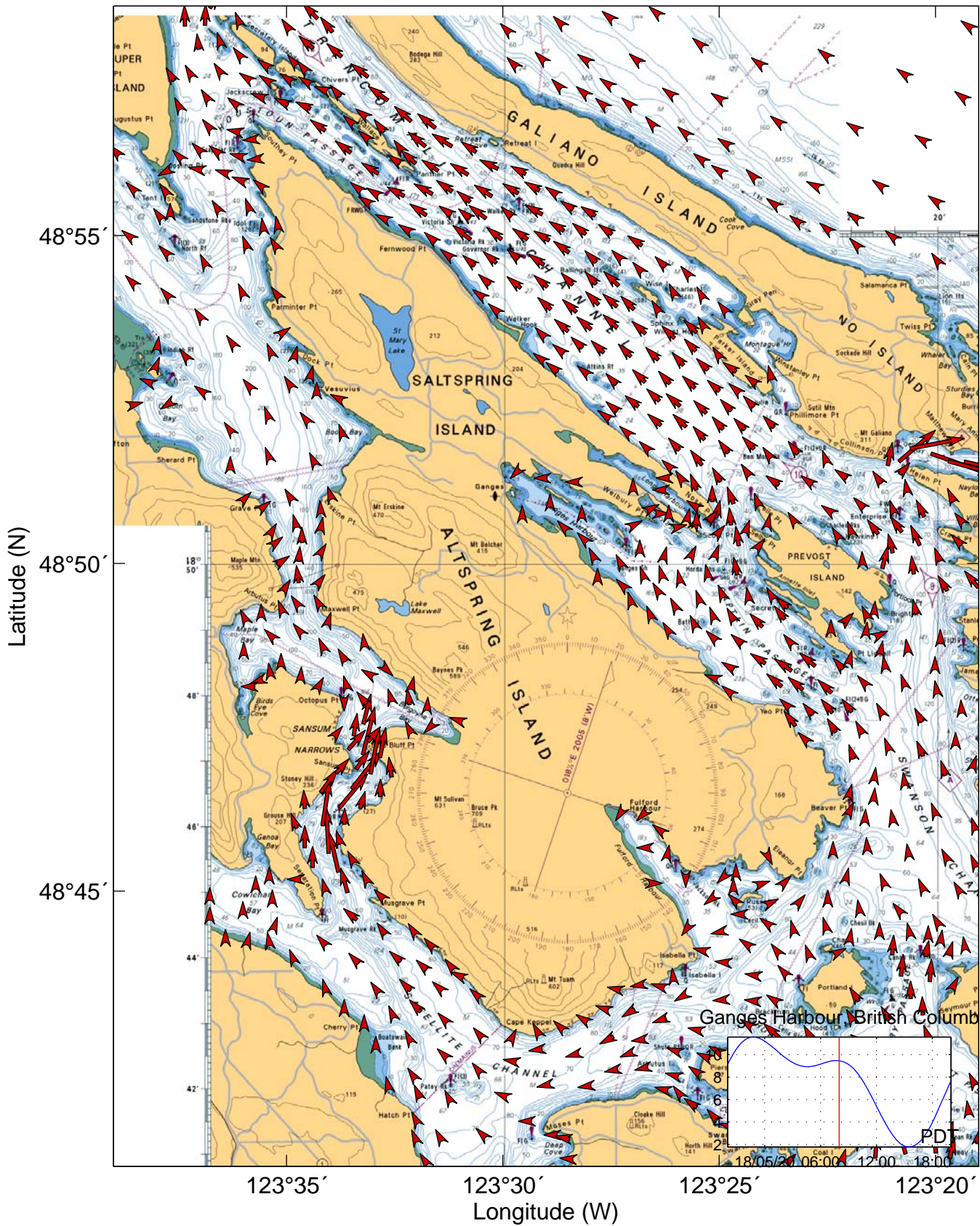
Tidal Currents for Saltspring Island 20-May-2018 07:00:00 [PDT]

150 cm/s



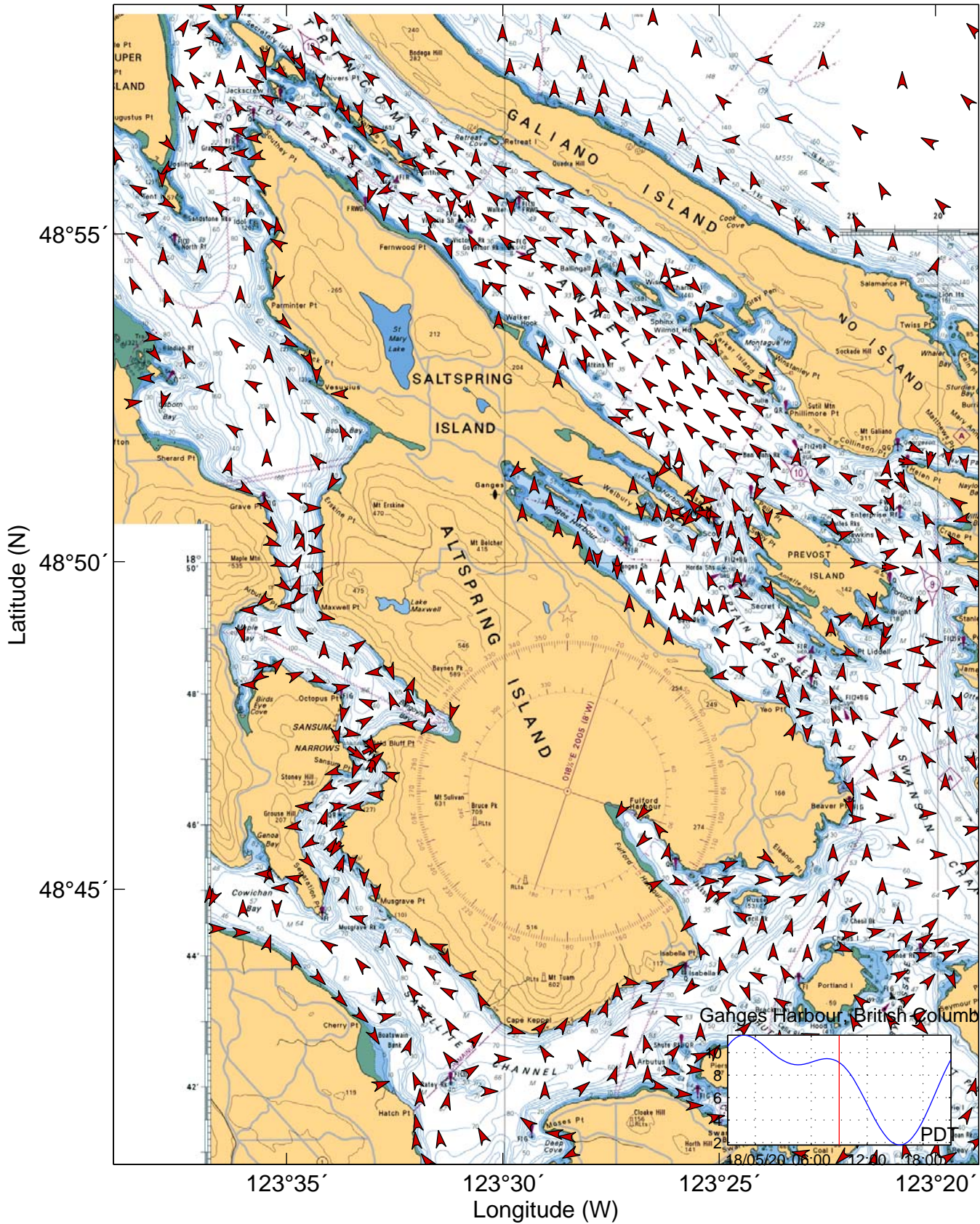
Tidal Currents for Saltspring Island 20-May-2018 08:00:00 [PDT]

150 cm/s



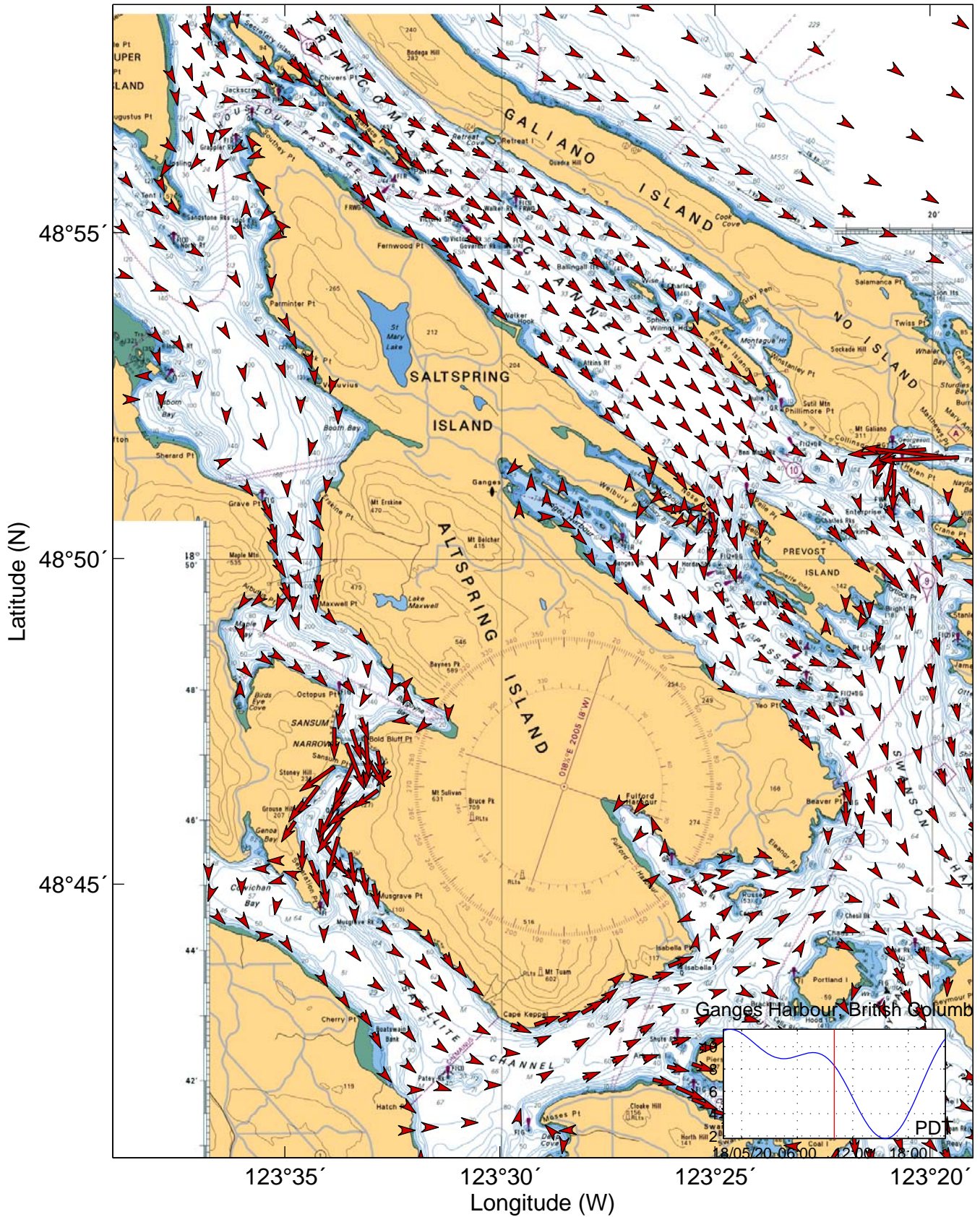
Tidal Currents for Saltspring Island 20-May-2018 09:00:00 [PDT]

150 cm/s



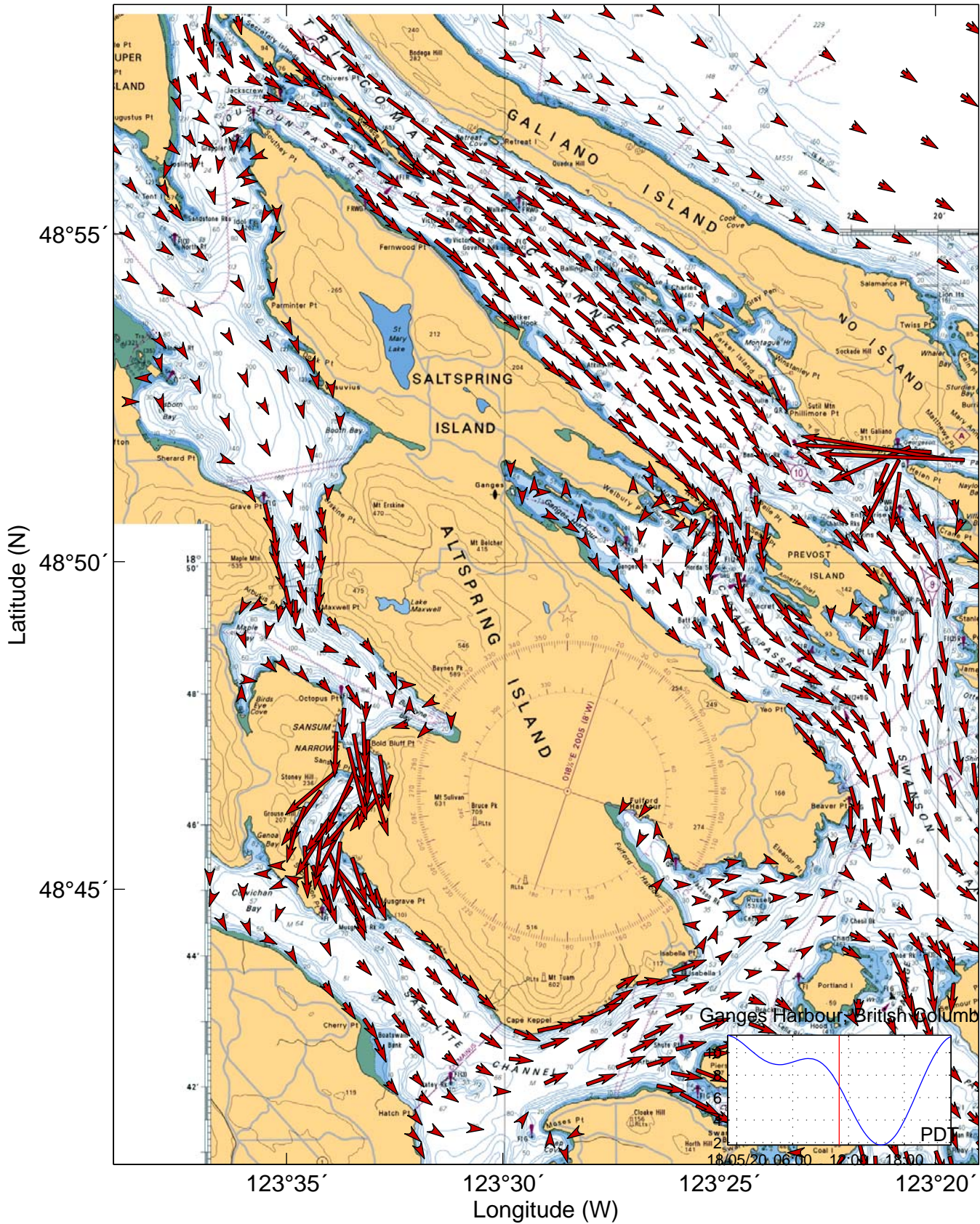
Tidal Currents for Saltspring Island 20-May-2018 10:00:00 [PDT]


150 cm/s



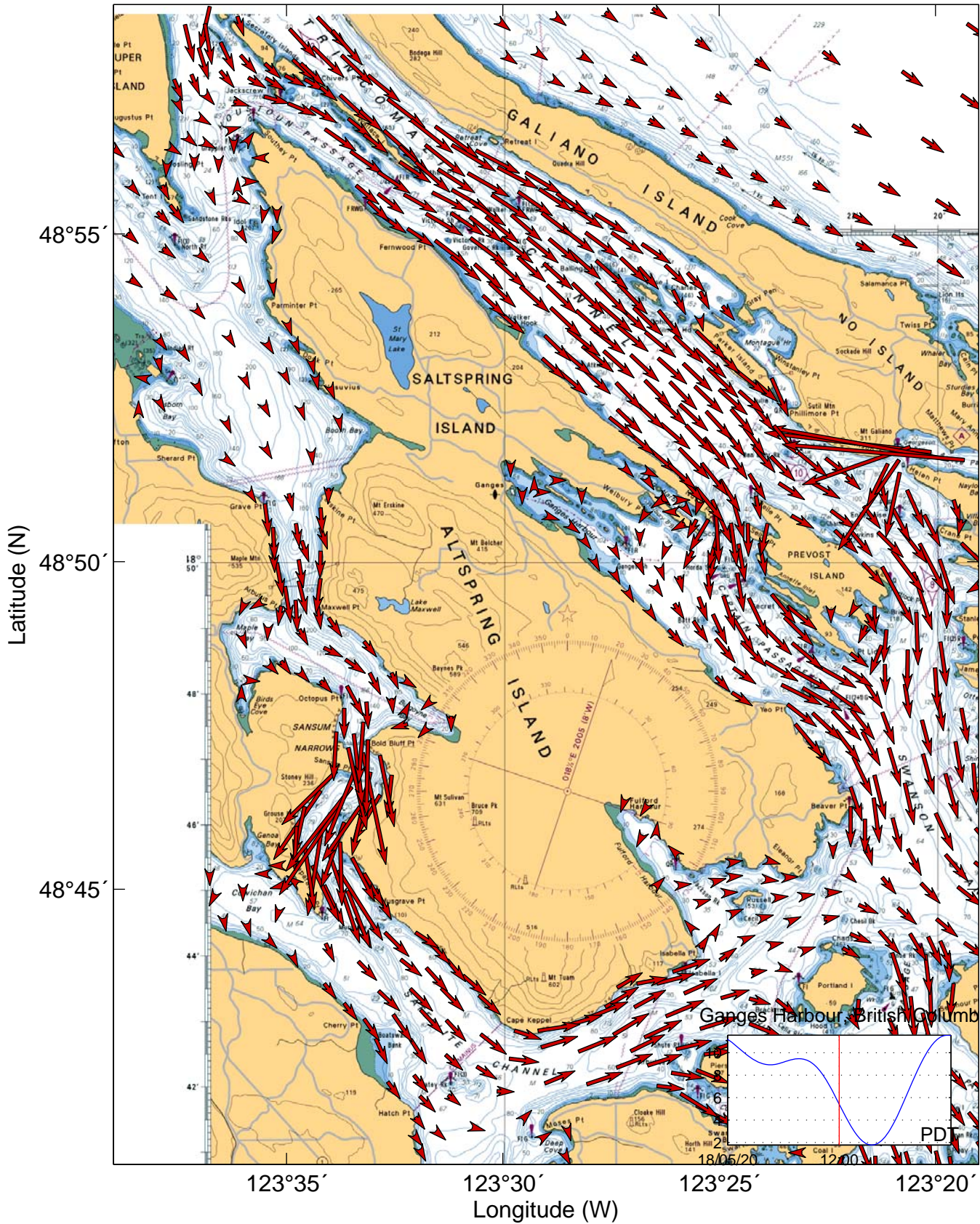
Tidal Currents for Saltspring Island 20-May-2018 11:00:00 [PDT]


150 cm/s



Tidal Currents for Saltspring Island 20-May-2018 12:00:00 [PDT] 

150 cm/s



Tidal Currents for Saltspring Island 20-May-2018 13:00:00 [PDT] 

150 cm/s

